

## 8 Rymer Grove, Longton

Guide Price £650,000

🛏 4 🍴 3 🚗 2

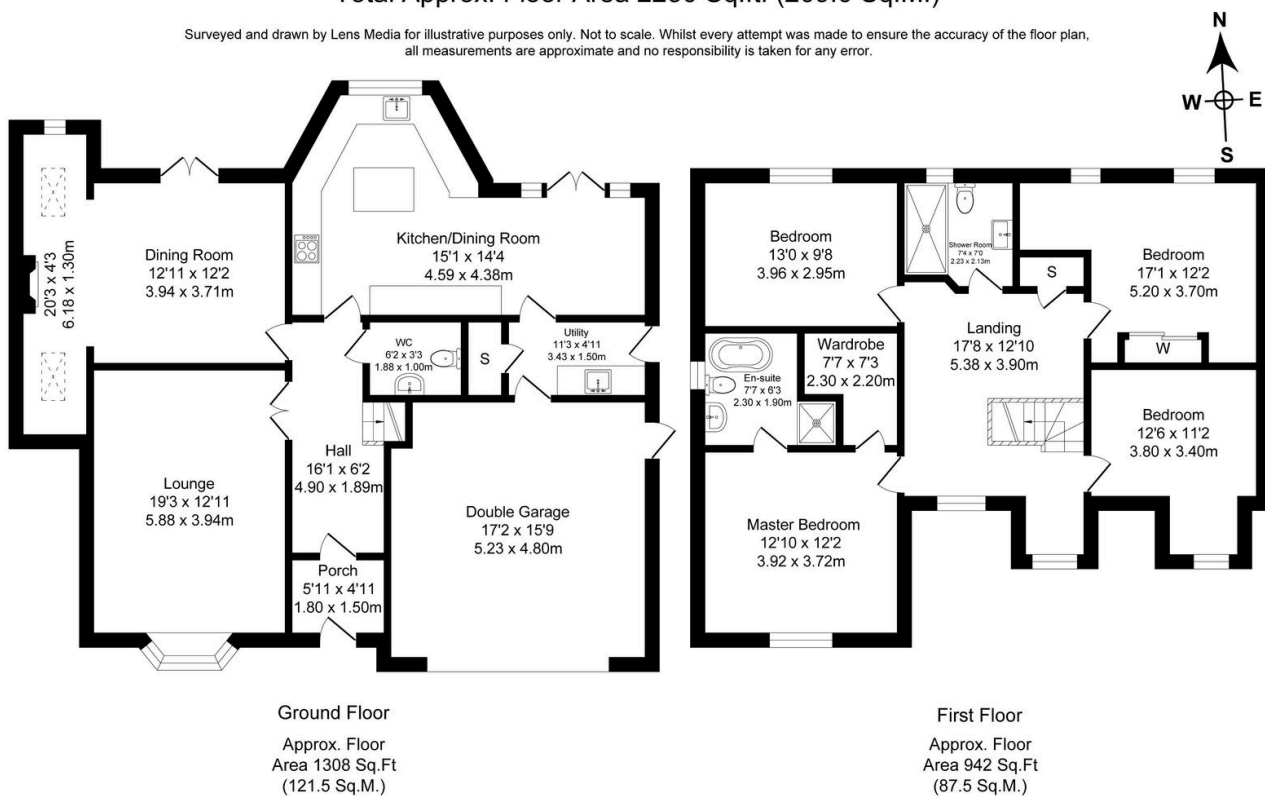


- Stunning four bedroom executive home
- Beautiful Neptune Chichester' kitchen/ diner
- Three bathrooms
- Home gym
- Central Longton location - close to local schools, shops and amenities
- Immaculately presented throughout
- Quiet 'private road' location
- Two receptions
- Summer house/Annexe
- Viewing highly recommended

### Rymer Grove

Total Approx. Floor Area 2250 Sq.ft. (209.0 Sq.M.)

Surveyed and drawn by Lens Media for illustrative purposes only. Not to scale. Whilst every attempt was made to ensure the accuracy of the floor plan, all measurements are approximate and no responsibility is taken for any error.



This exceptional four-bedroom detached property, located in the heart of Longton, offers a perfect blend of luxury and comfort. Situated on a quiet, private road, this home exudes elegance from the moment you step into the impressive entrance hall. The ground floor features two inviting reception rooms, ideal for entertaining or relaxing with family. The heart of this home is the stunning Neptune 'Chichester' kitchen/diner. The property also boasts three bathrooms, utility room, bar and home gym. Four well-appointed bedrooms lead off from the galleried landing, with en-suite and dressing room to the master bedroom. The garden is beautifully

landscaped with a charming summer house/annexe . This exquisite family home combines privacy and luxury, in an unbeatable location in the much sought-after village of Longton. Property is Freehold and viewing is highly recommended. Please quote JB0397 when calling to arrange a viewing or contact Jenny Baines direct on 07861 418900